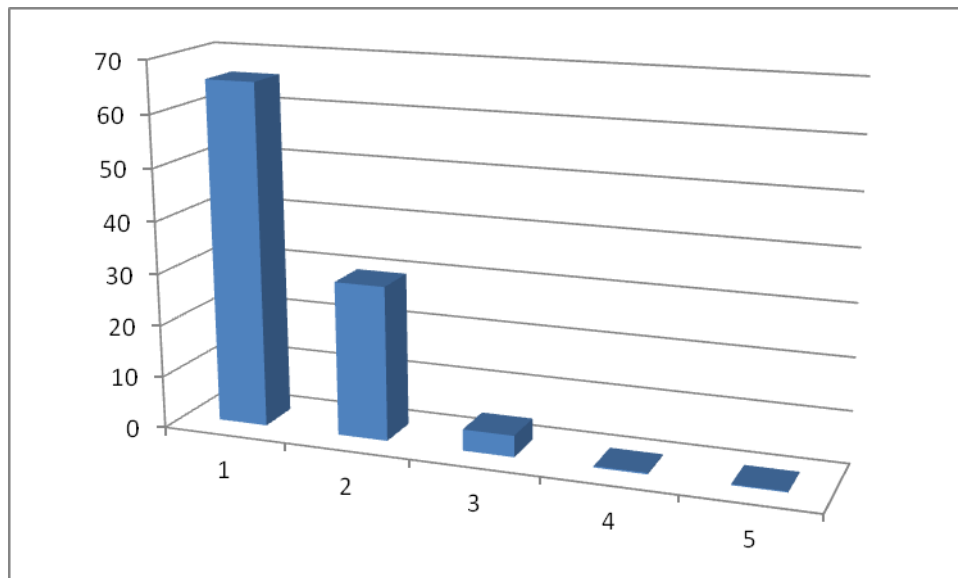


Student Satisfaction Survey on Teaching Learning Process
Academic Year 2019-20

1. How much of the syllabus was covered in the class?

	% No of Students
85 to 100%	64.50
70 to 84%	29.85
55 to 69%	4.46
30 to 54%	0.61
Below 30%	0.58

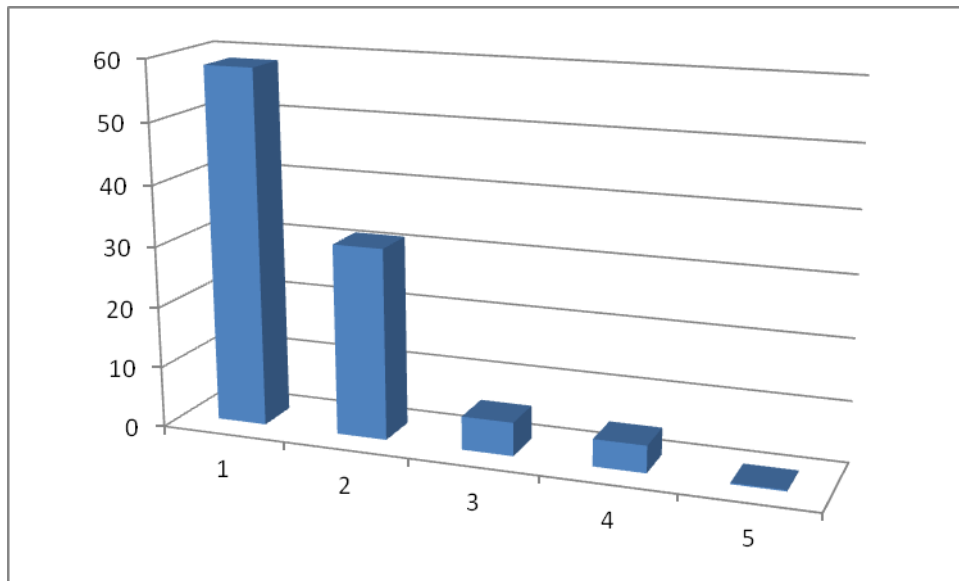
% No of Students



2. How well did the teachers prepare for the classes?

	% No of Students
Thoroughly	59.69
Satisfactorily	30.06
Poorly	5.49
Indifferently	4.55
Won't teach at all	0.21

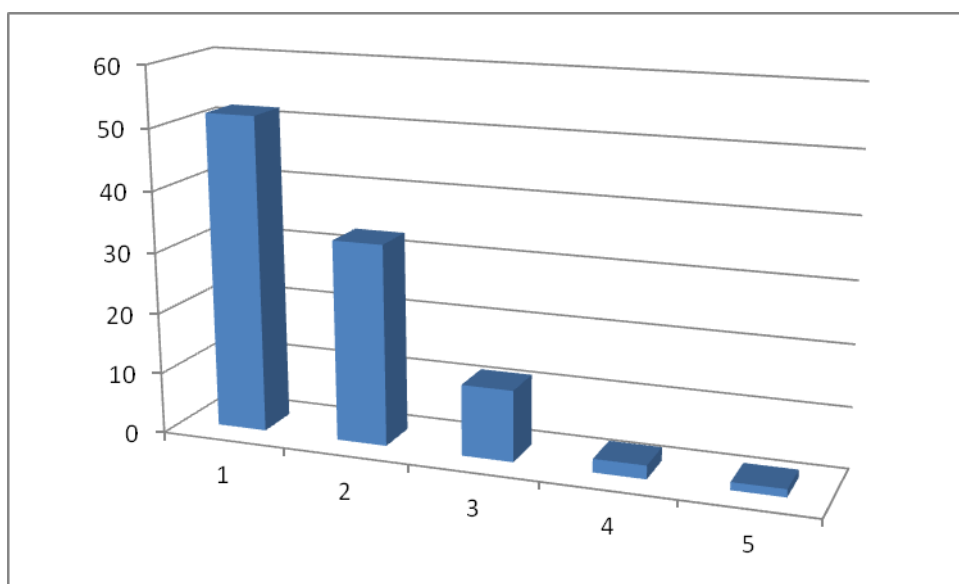
% No of Students



3. How well were the teachers able to communicate?

	% No of Students
Always effective	51.99
Sometimes effective	32.97
Just satisfactorily	11.96
Generally ineffective	2.54
Very poor communication	0.54

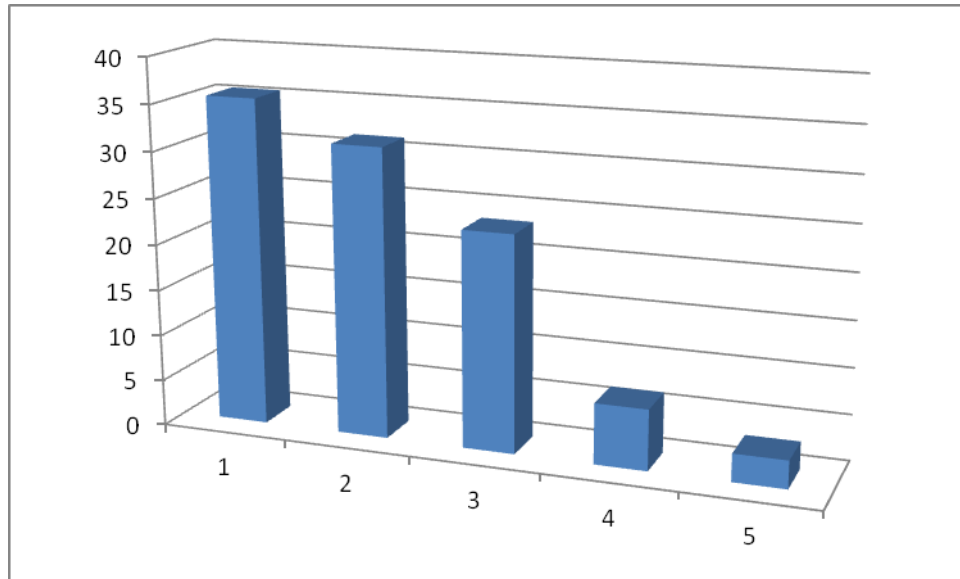
% No of Students



4. The teacher's approach to teaching can best be described as

	% No of Students
Excellent	35.16
Very good	31.87
Good	22.05
Fair	6.89
Poor	4.03

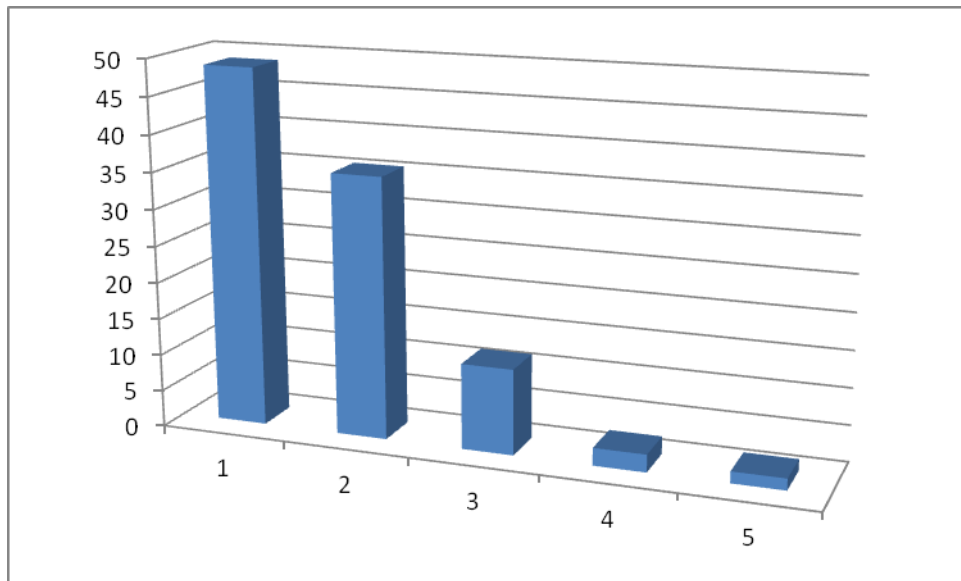
% No of Students



5. Fairness of the internal evaluation process by the teachers.

	% No of Students
Always fair	47.15
Usually fair	36.28
Sometimes unfair	11.99
Usually unfair	2.78
Unfair	1.80

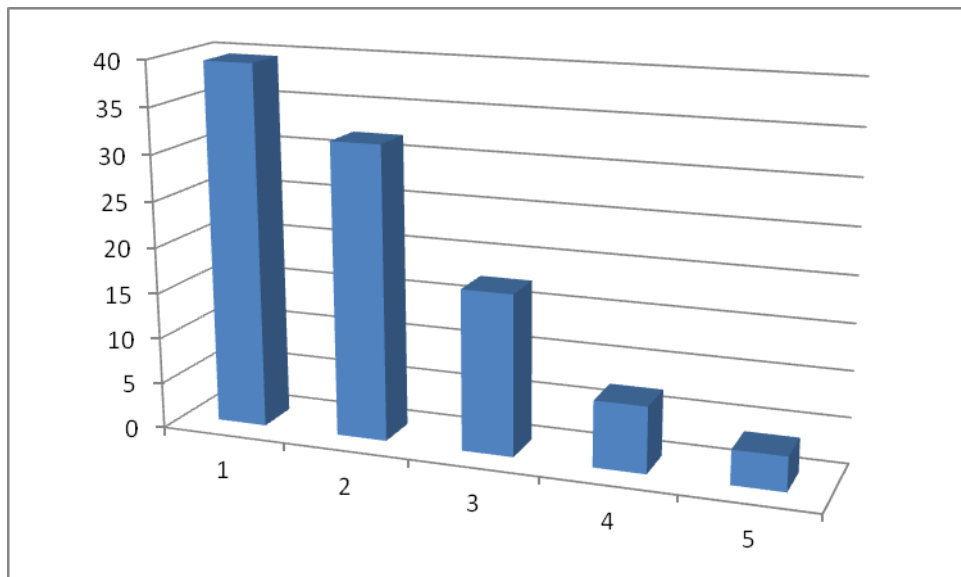
% No of Students



6. Was your performance in assignments discussed with you?

	% No of Students
Every time	39.03
Usually	31.12
Sometimes	16.51
Rarely	9.02
Never	4.32

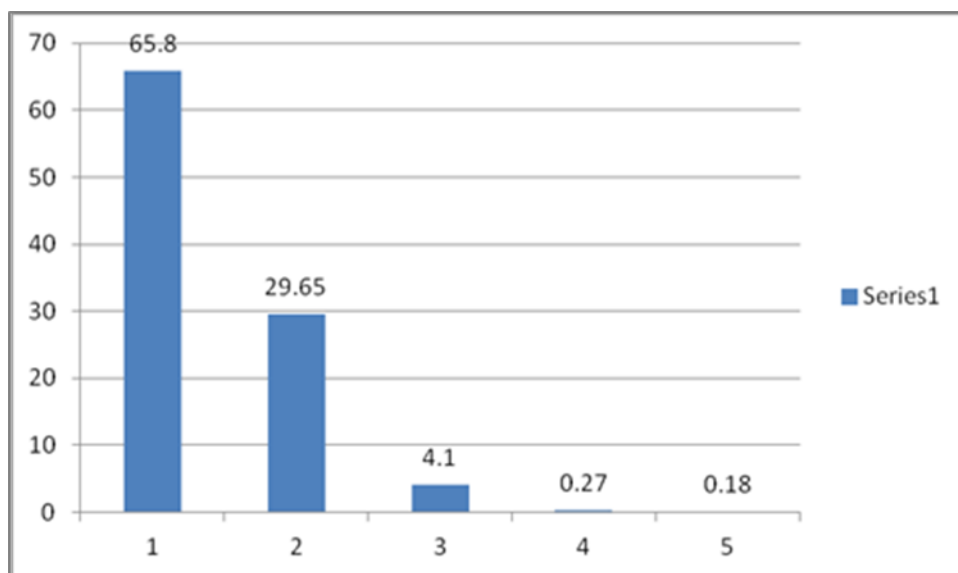
% No of Students



7. The institute takes active interest in promoting internship, student exchange, field visit opportunities for students

	% No of Students
Regularly	65.80
Often	29.65
Sometimes	4.10
Rarely	0.27
Never	0.18

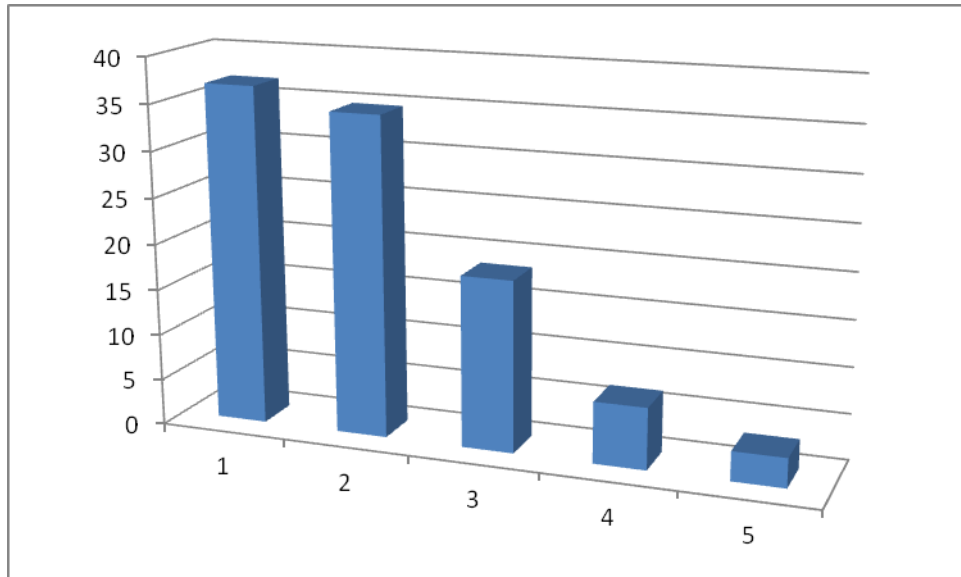
% No of Students



8. The teaching and mentoring process in your institution facilitates you in cognitive, social and emotional growth

	% No of Students
Significantly	36.67
Very well	35.69
Moderately	19.07
Marginally	7.69
Not at all	0.88

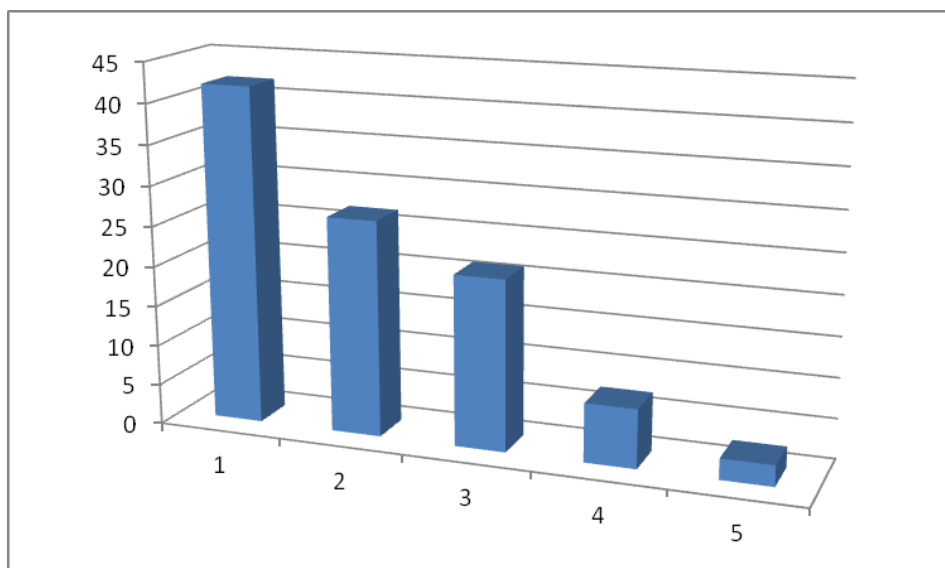
% No of Students



9. The institution provides multiple opportunities to learn and grow

	% No of Students
Strongly agree	41.06
Agree	26.76
Neutral	21.02
Disagree	8.33
Strongly disagree	2.83

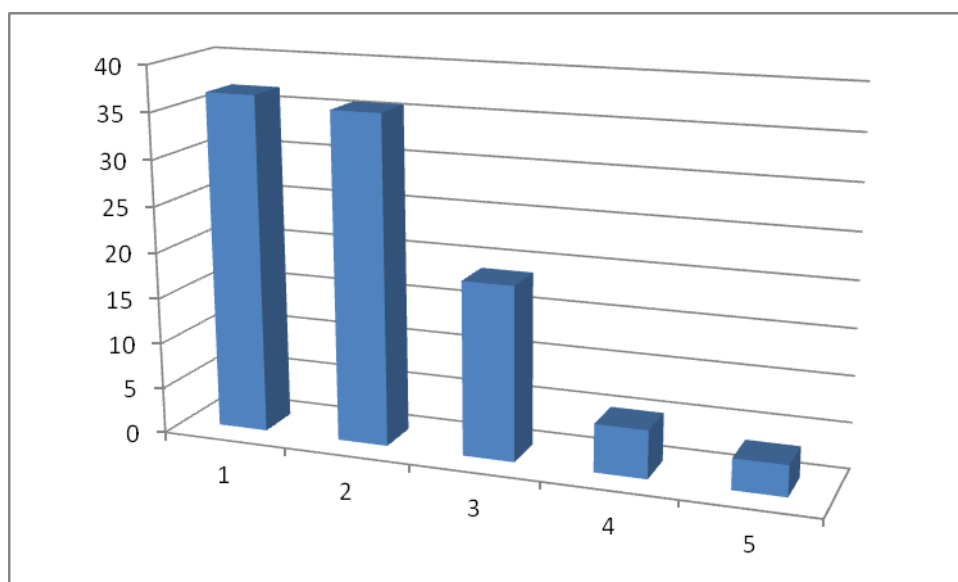
% No of Students



10. Teachers inform you about your expected competencies, course outcomes and programme outcomes.

	% No of Students
Every time	36.13
Usually	33.71
Sometimes	19.92
Rarely	5.93
Never	4.31

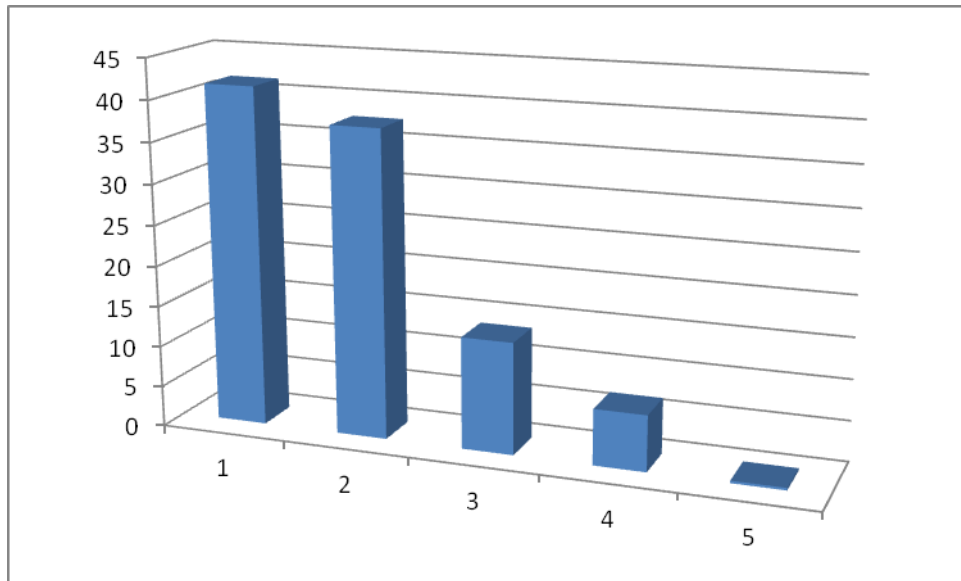
% No of Students



11. Your mentor does a necessary follow-up with an assigned task to you.

	% No of Students
Every time	40.65
Usually	38.61
Occasionally/Sometimes	14.69
Rarely	5.98
I don't have a mentor	0.07

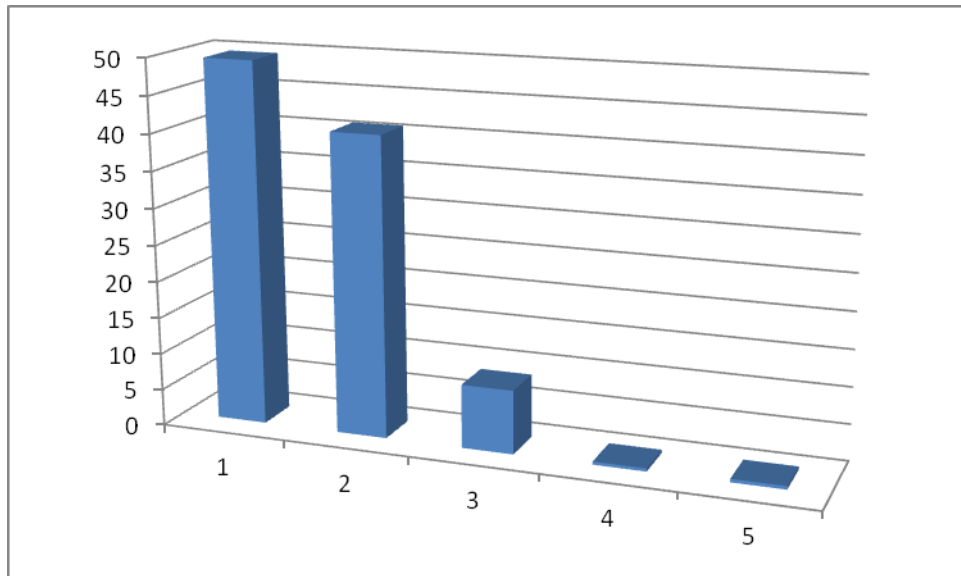
% No of Students



12. The teachers illustrate the concepts through examples and applications.

	% No of Students
Every time	49.15
Usually	40.14
Sometimes	8.89
Rarely	1.43
Never	0.39

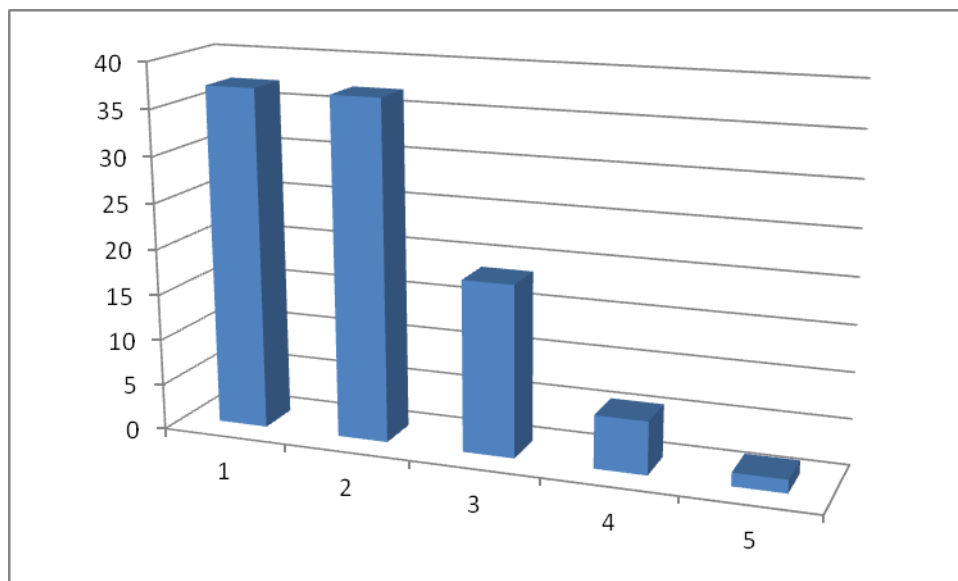
% No of Students



13. The teachers identify your strengths and encourage you with providing right level of challenges.

	% No of Students
Fully	37.35
Reasonably	36.96
Partially	19.66
Slightly	7.77
Unable to	0.33

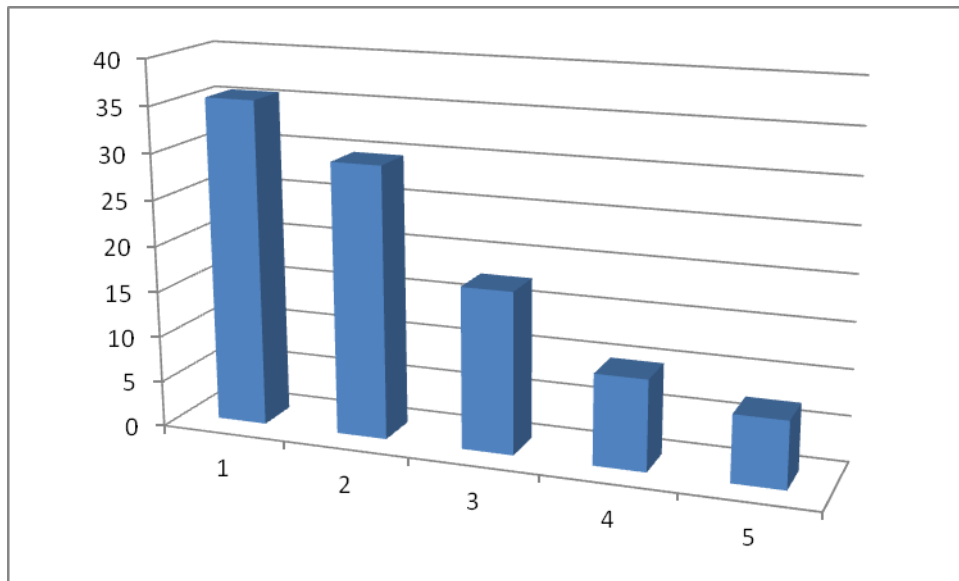
% No of Students



14. Teachers are able to identify your weaknesses and help you to overcome them

	% No of Students
Every time	35.56
Usually	29.65
Sometimes	17.61
Rarely	9.89
Never	7.29

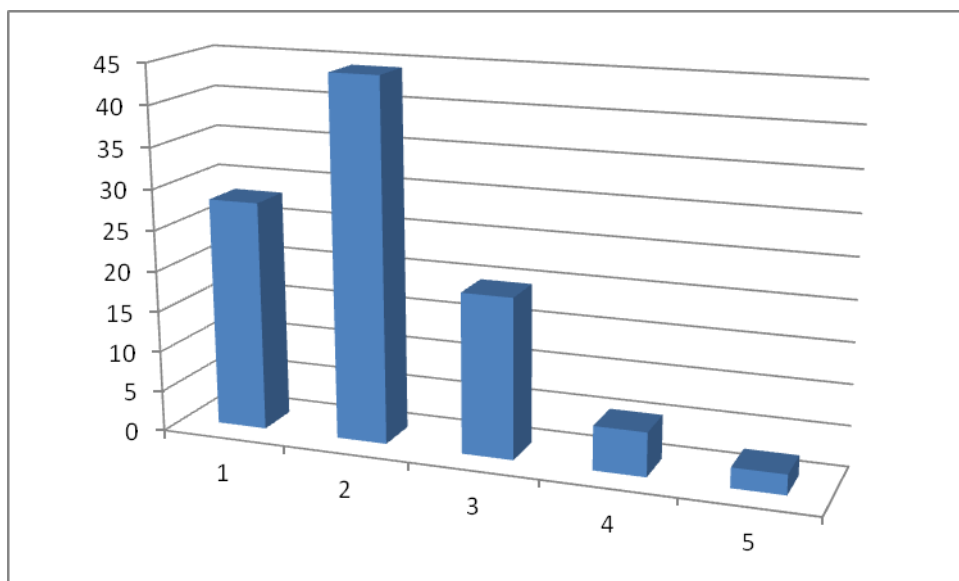
% No of Students



15. The institution makes effort to engage students in the monitoring, review and continuous quality improvement of the teaching learning process.

	% No of Students
Strongly agree	28.19
Agree	44.29
Neutral	19.65
Disagree	5.40
Strongly disagree	2.47

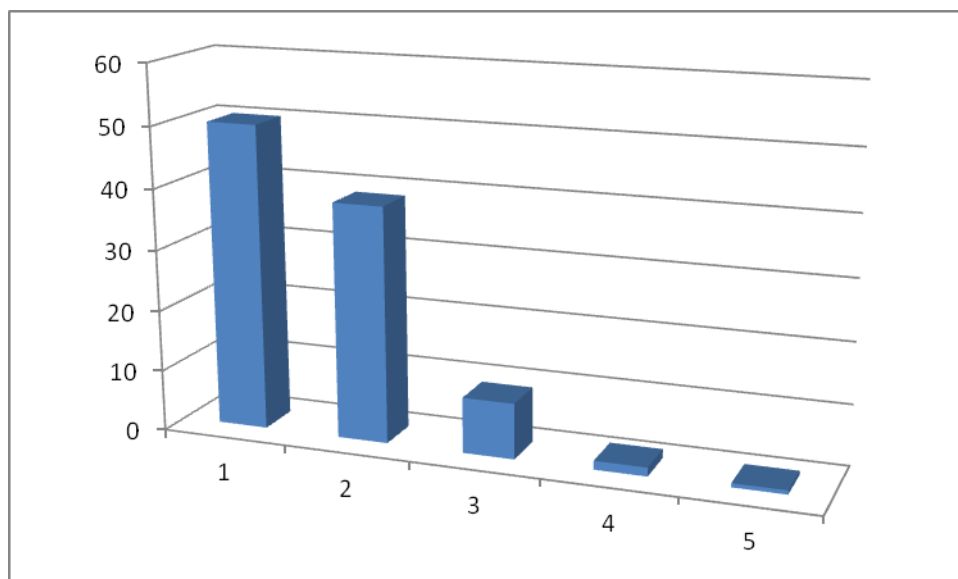
% No of Students



16. The institute/ teachers use student centric methods, such as experiential learning, participative learning and problem solving methodologies for enhancing learning experiences.

	% No of Students
To a great extent	50.11
Moderate	39.65
Some what	9.12
Very little	1.45
Not at all	0.67

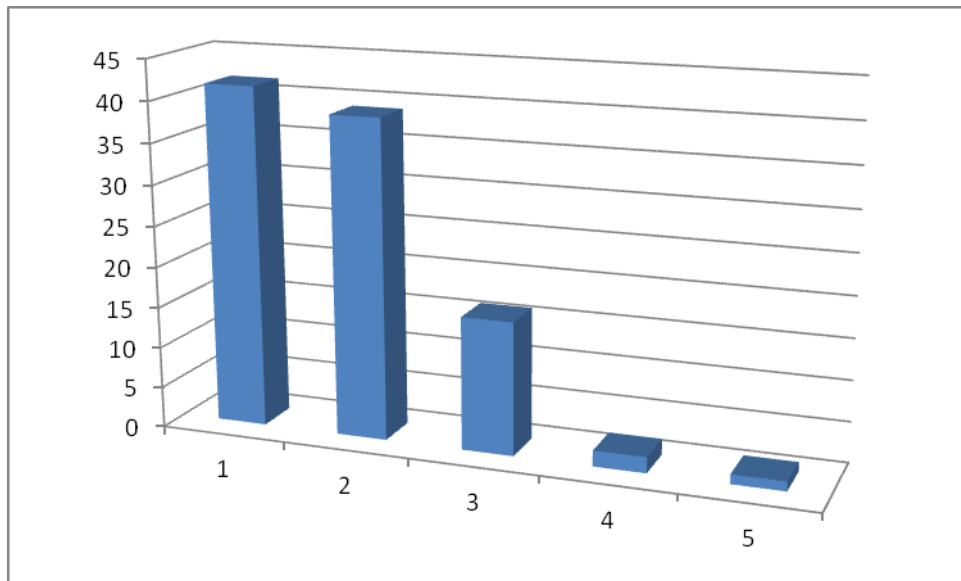
% No of Students



17. Teachers encourage you to participate in extracurricular activities

	% No of Students
Strongly agree	41.68
Agree	38.95
Neutral	16.25
Disagree	1.95
Strongly disagree	1.17

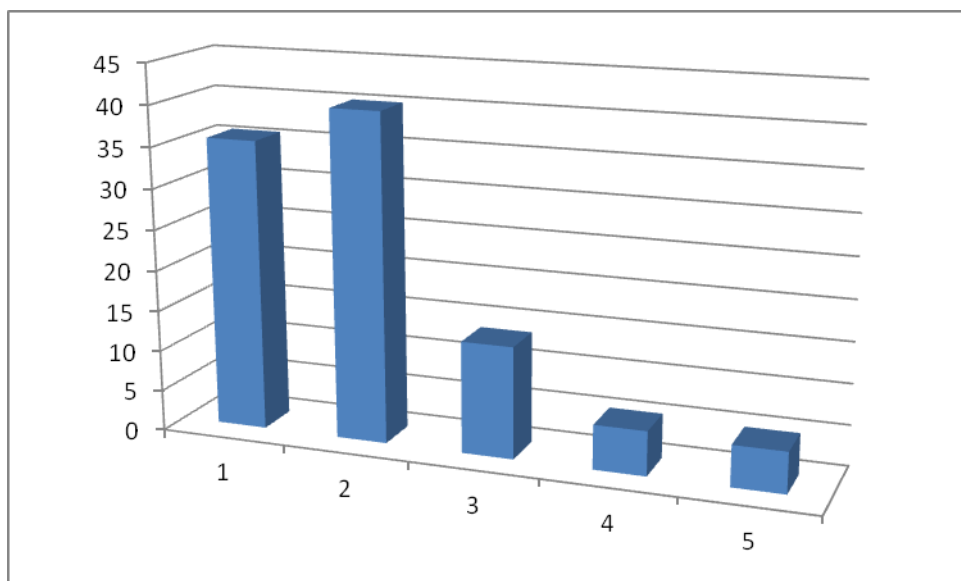
% No of Students



18. Efforts are made by the institute/ teachers to inculcate soft skills, life skills and employability skills to make you ready for the world of work.

	% No of Students
To a great extent	35.65
Moderate	40.15
Some what	13.69
Very little	5.46
Not at all	5.05

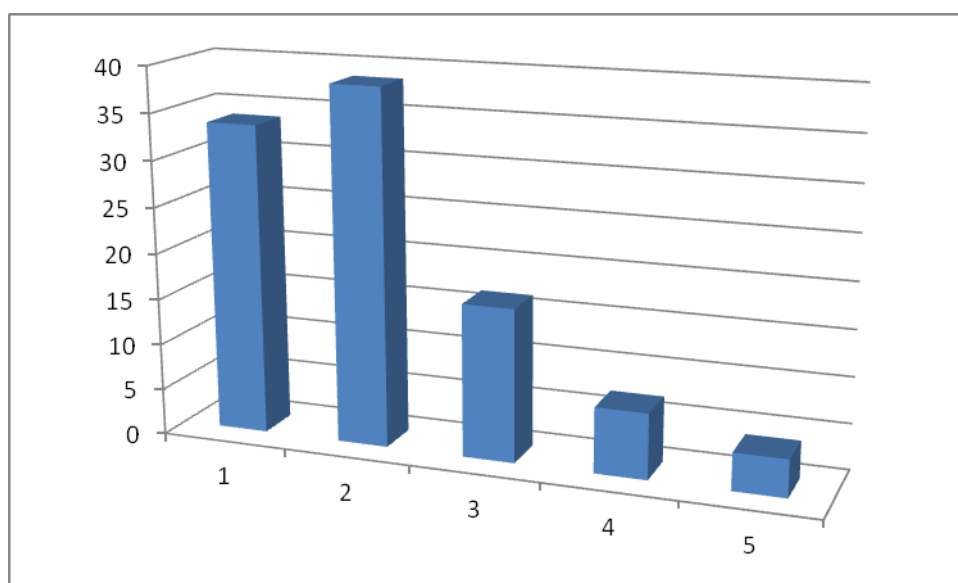
% No of Students



19. What percentage of teachers use ICT tools such as LCD projector, Multimedia, etc. while teaching.

	% No of Students
Above 90%	33.69
70 – 89%	39.52
50 – 69%	15.58
30 – 49%	7.12
Below 29%	4.09

% No of Students



20. The overall quality of teaching-learning process in your institute is very good.

	% No of Students
Strongly agree	33.52
Agree	42.38
Neutral	16.92
Disagree	3.85
Strongly disagree	3.33

% No of Students

