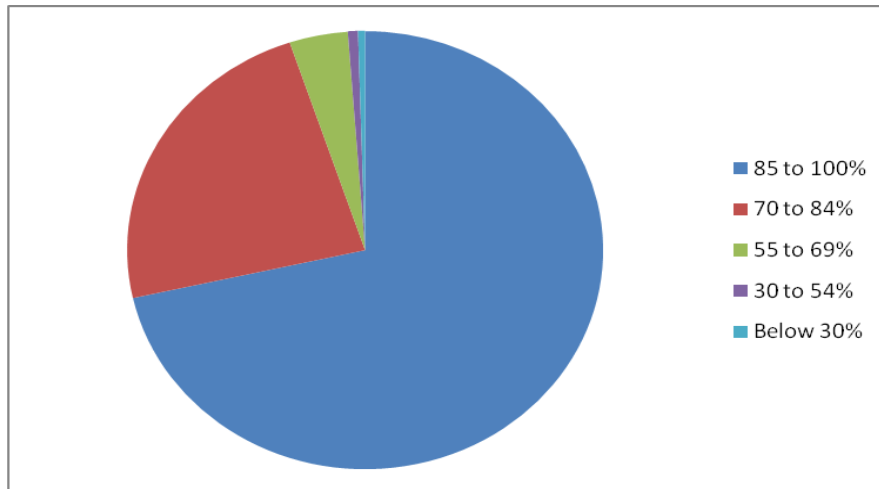




Student Satisfaction Survey on Teaching Learning Process Academic Year 2021-22

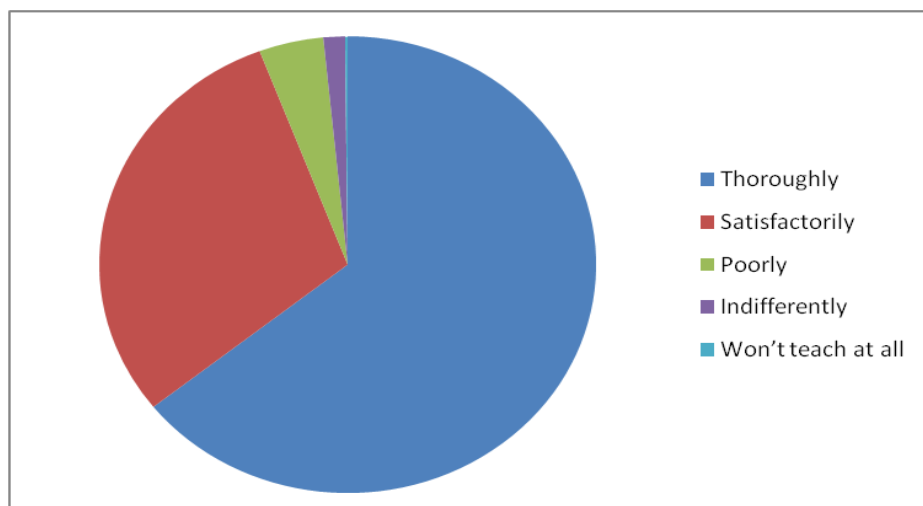
1. How much of the syllabus was covered in the class?

	% No of Students
85 to 100%	71.5
70 to 84%	23.35
55 to 69%	3.98
30 to 54%	0.69
Below 30%	0.48



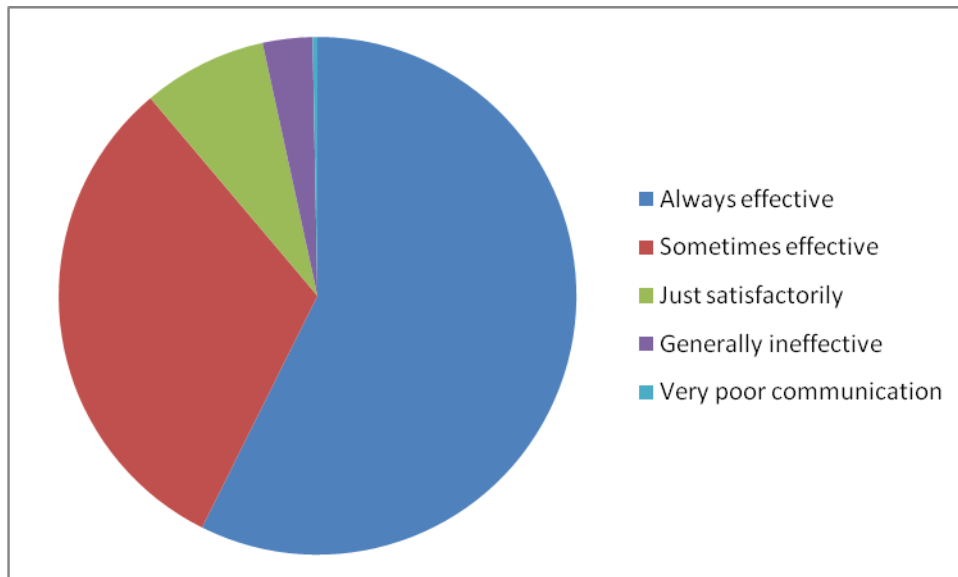
2. How well did the teachers prepare for the classes?

	% No of Students
Thoroughly	64.28
Satisfactorily	29.96
Poorly	4.19
Indifferently	1.40
Won't teach at all	0.17



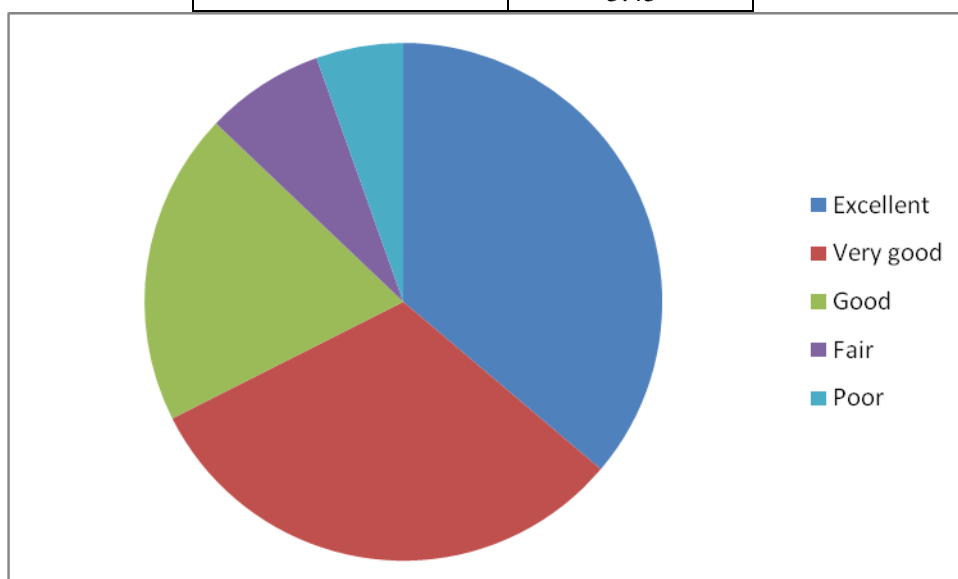
3. How well were the teachers able to communicate?

	% No of Students
Always effective	57.36
Sometimes effective	31.47
Just satisfactorily	7.76
Generally ineffective	3.11
Very poor communication	0.30



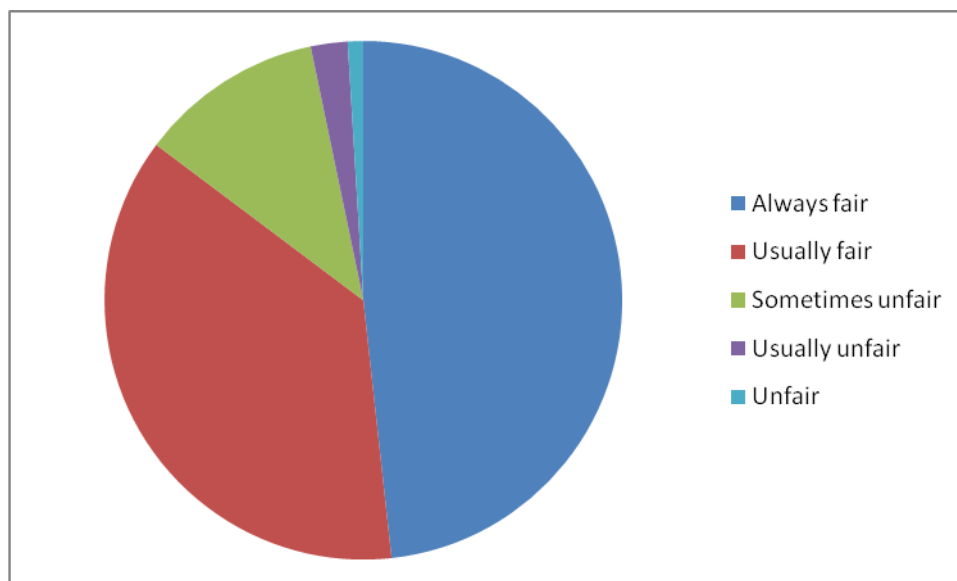
4. The teacher's approach to teaching can best be described as

	% No of Students
Excellent	36.19
Very good	31.37
Good	19.55
Fair	7.44
Poor	5.45



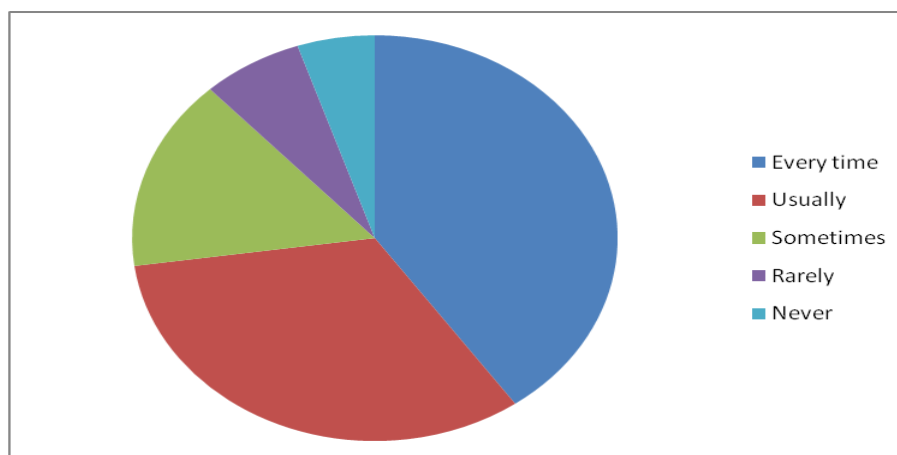
5. Fairness of the internal evaluation process by the teachers.

	% No of Students
Always fair	48.26
Usually fair	36.98
Sometimes unfair	11.49
Usually unfair	2.30
Unfair	0.97



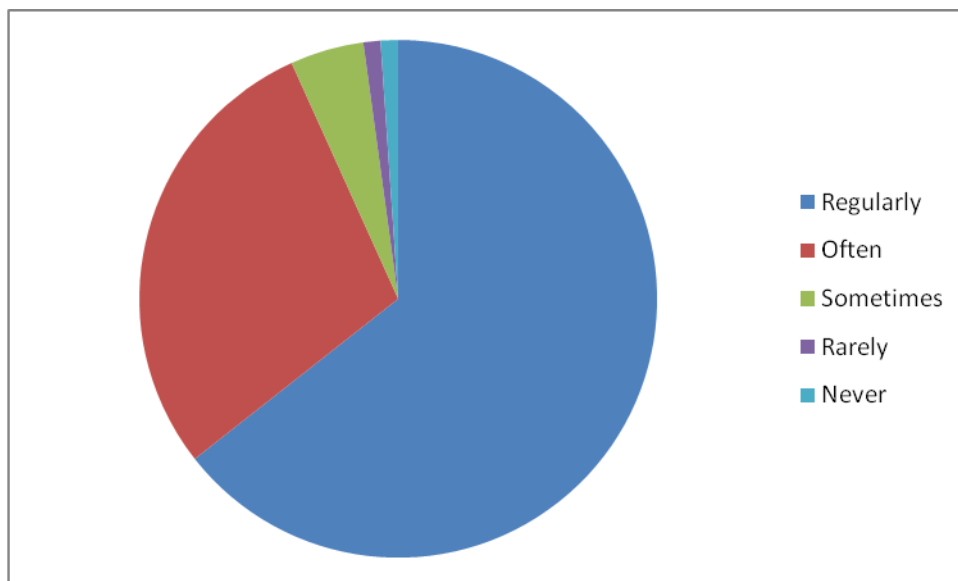
6. Was your performance in assignments discussed with you?

	% No of Students
Every time	40.19
Usually	32.62
Sometimes	15.31
Rarely	6.72
Never	5.16



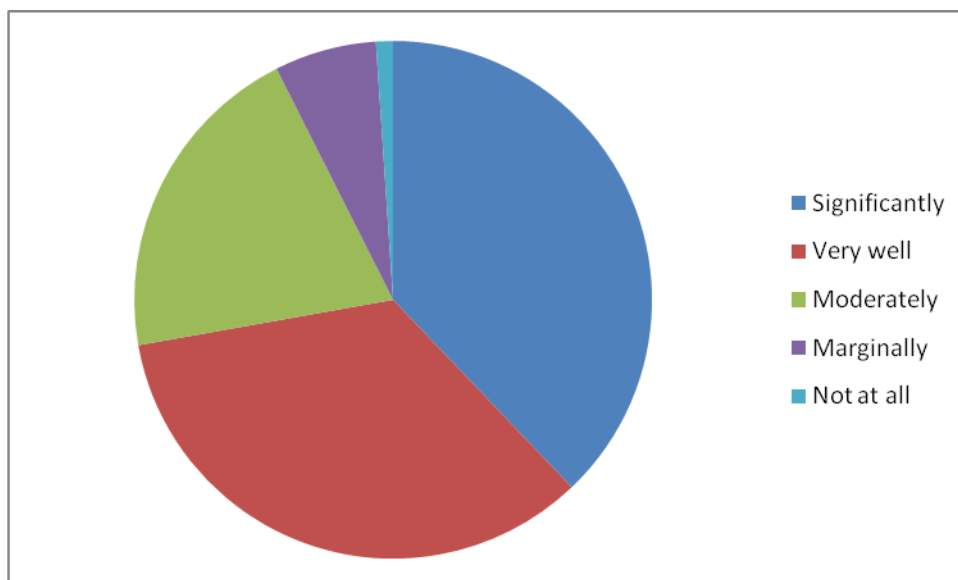
7. The institute takes active interest in promoting internship, student exchange, field visit opportunities for students

	% No of Students
Regularly	64.39
Often	28.85
Sometimes	4.60
Rarely	1.07
Never	1.09



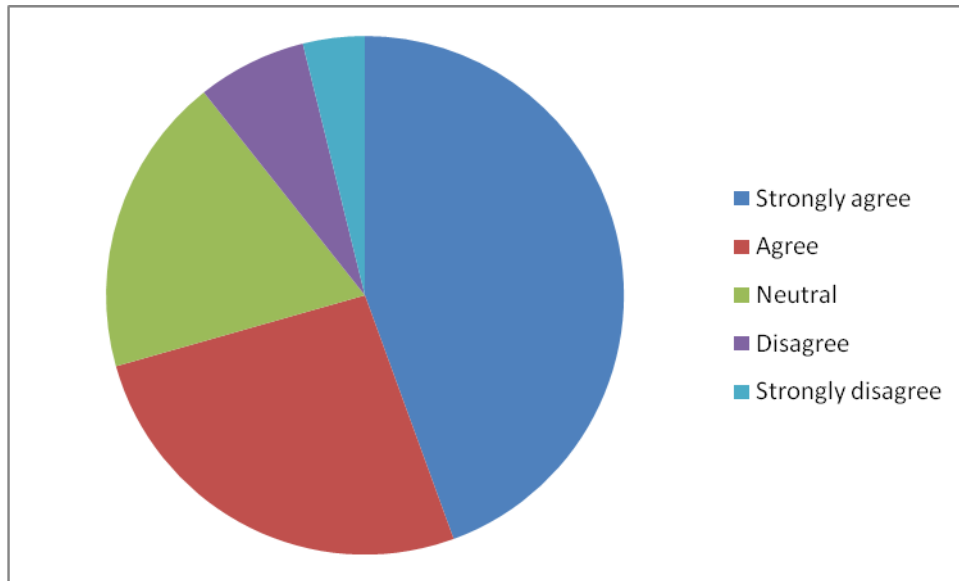
8. The teaching and mentoring process in your institution facilitates you in cognitive, social and emotional growth

	% No of Students
Significantly	37.88
Very well	34.31
Moderately	20.37
Marginally	6.38
Not at all	1.06



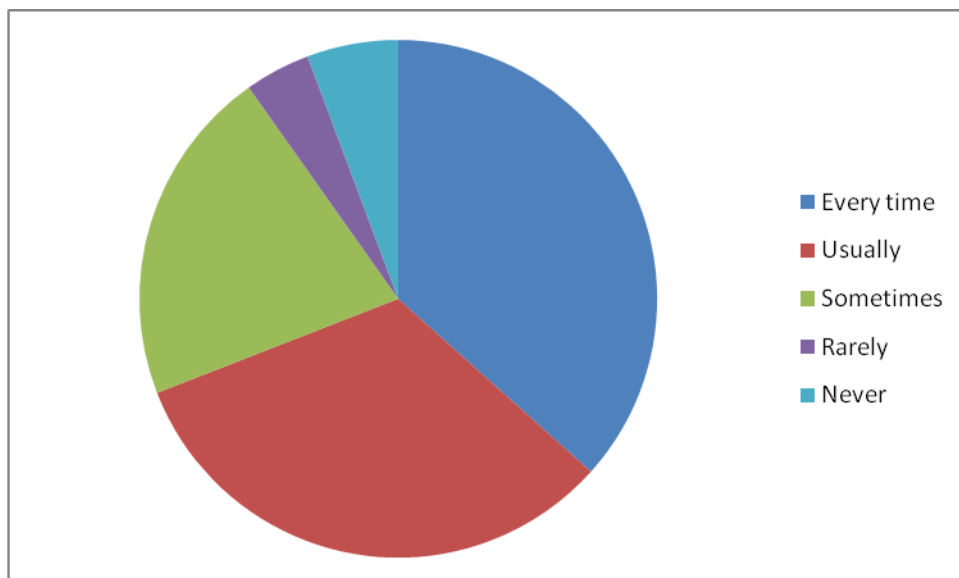
9. The institution provides multiple opportunities to learn and grow

	% No of Students
Strongly agree	44.43
Agree	26.16
Neutral	18.72
Disagree	6.83
Strongly disagree	3.86



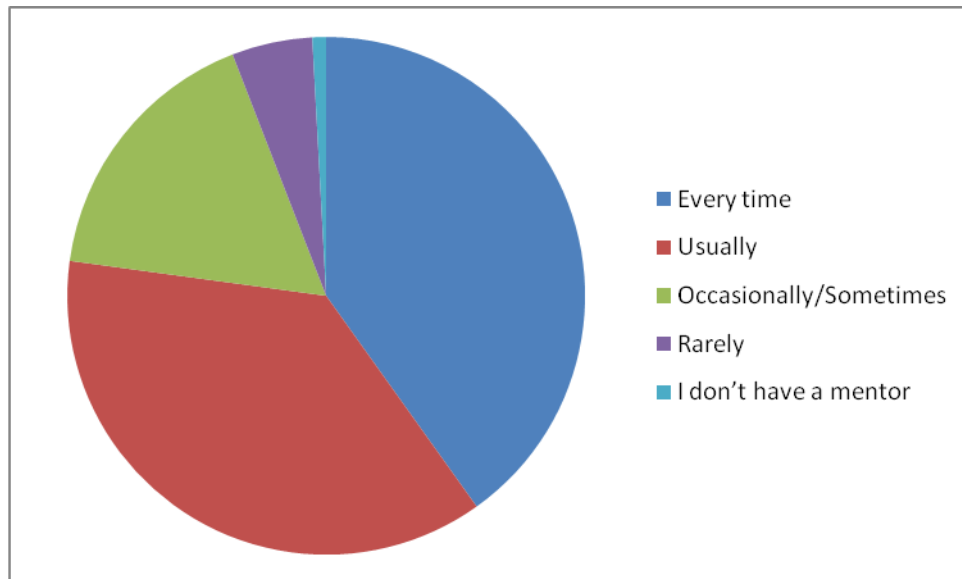
10. Teachers inform you about your expected competencies, course outcomes and programme outcomes.

	% No of Students
Every time	36.63
Usually	32.45
Sometimes	21.12
Rarely	4.10
Never	5.70



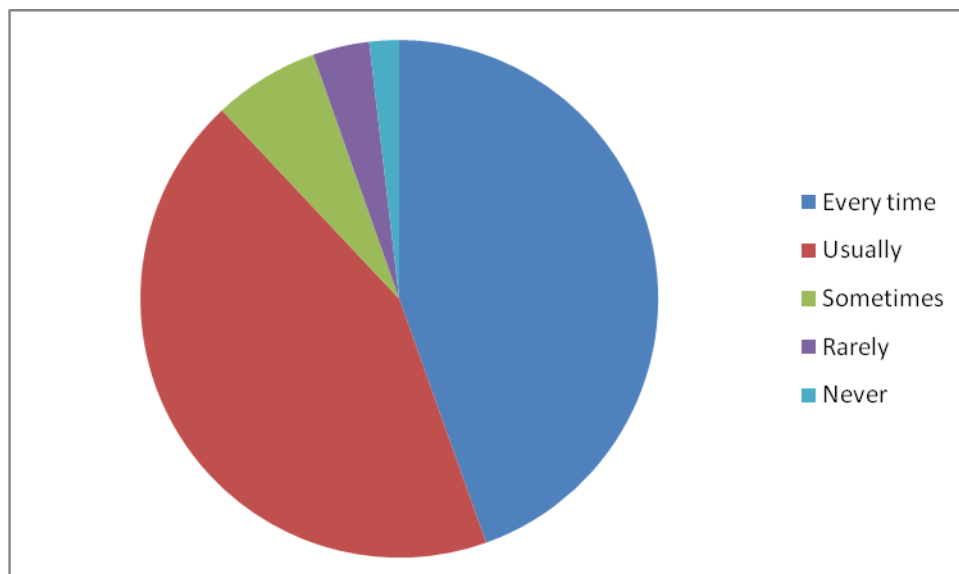
11. Your mentor does a necessary follow-up with an assigned task to you.

	% No of Students
Every time	40.13
Usually	37.03
Occasionally/Sometimes	16.95
Rarely	5.03
I don't have a mentor	0.86



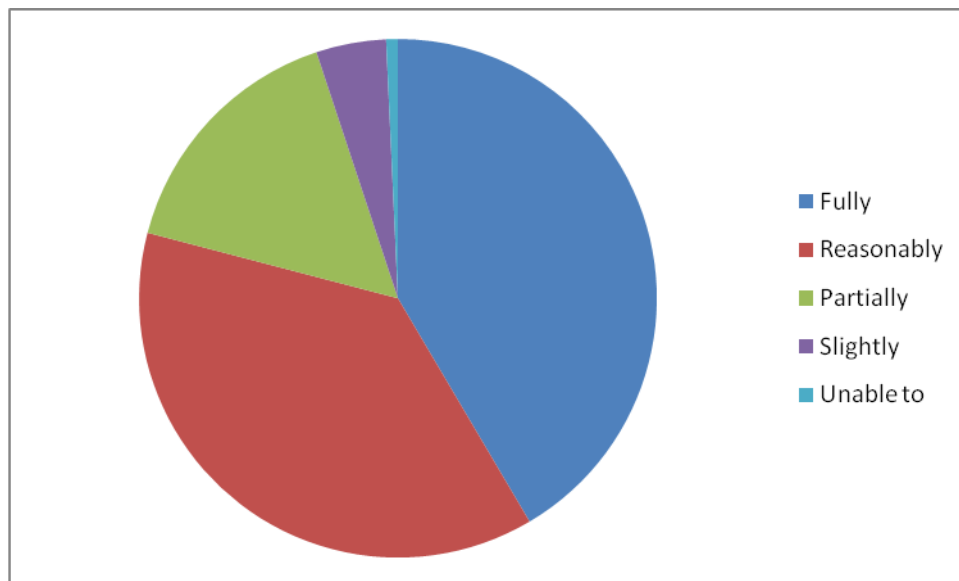
12. The teachers illustrate the concepts through examples and applications.

	% No of Students
Every time	44.55
Usually	43.44
Sometimes	6.61
Rarely	3.54
Never	1.86



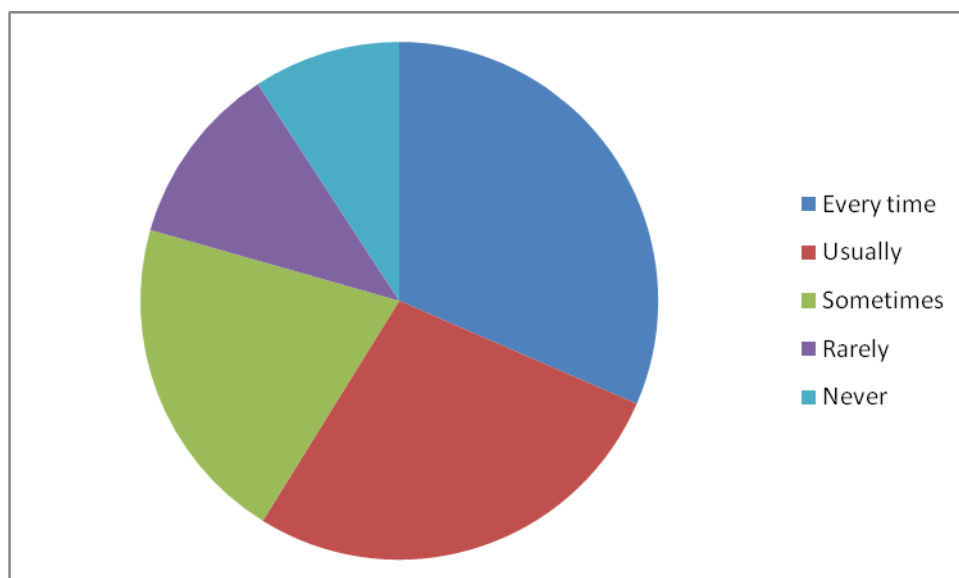
13. The teachers identify your strengths and encourage you with providing right level of challenges.

	% No of Students
Fully	41.51
Reasonably	37.56
Partially	15.83
Slightly	4.37
Unable to	0.73



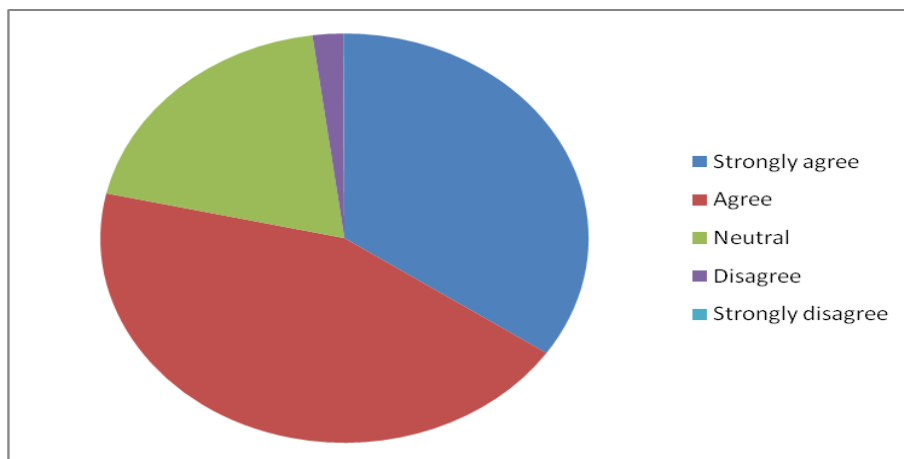
14. Teachers are able to identify your weaknesses and help you to overcome them

	% No of Students
Every time	31.51
Usually	27.33
Sometimes	20.57
Rarely	11.39
Never	9.20



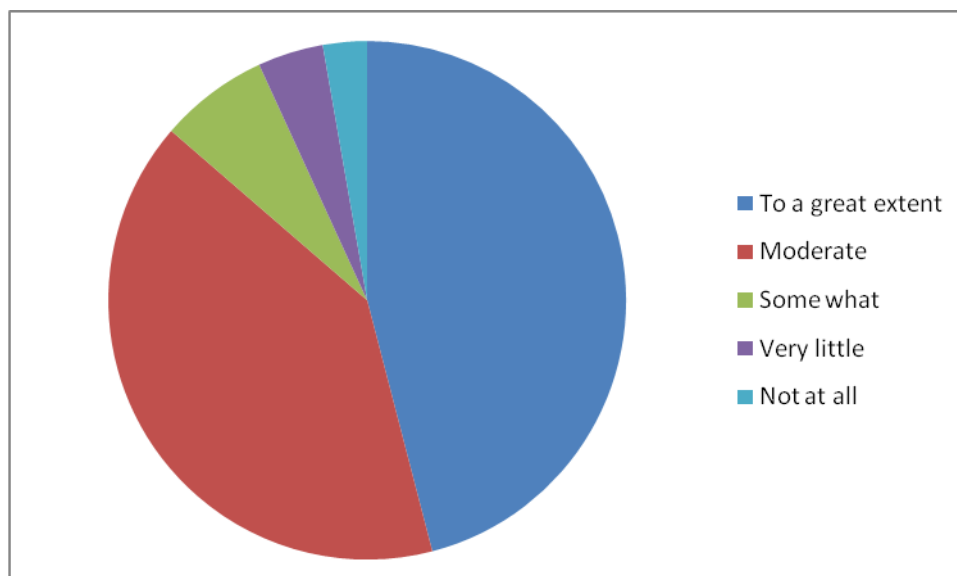
15. The institution makes effort to engage students in the monitoring, review and continuous quality improvement of the teaching learning process.

	% No of Students
Strongly agree	34.49
Agree	44.02
Neutral	19.39
Disagree	2.01
Strongly disagree	0.09



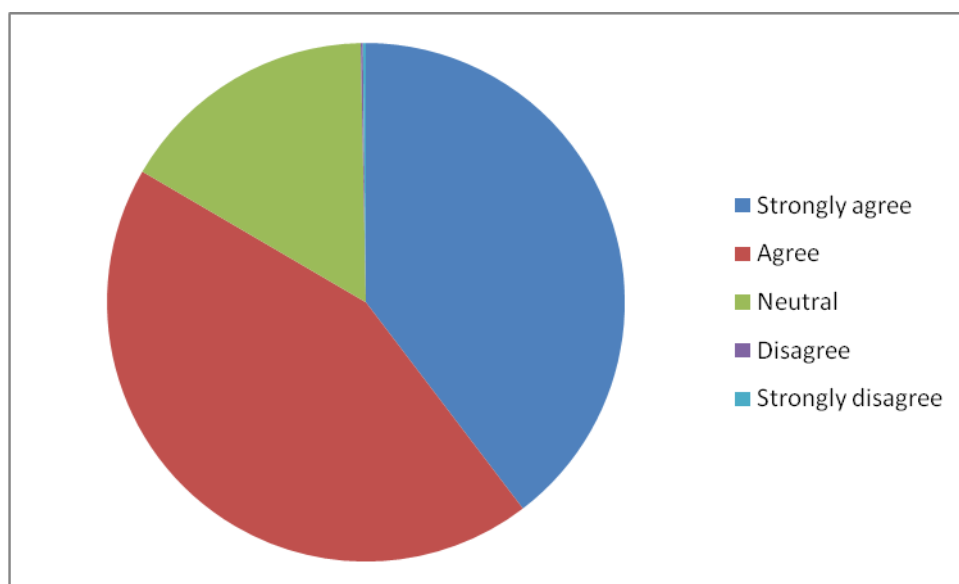
16. The institute/ teachers use student centric methods, such as experiential learning, participative learning and problem solving methodologies for enhancing learning experiences.

	% No of Students
To a great extent	45.91
Moderate	40.35
Some what	6.8
Very little	4.1
Not at all	2.75



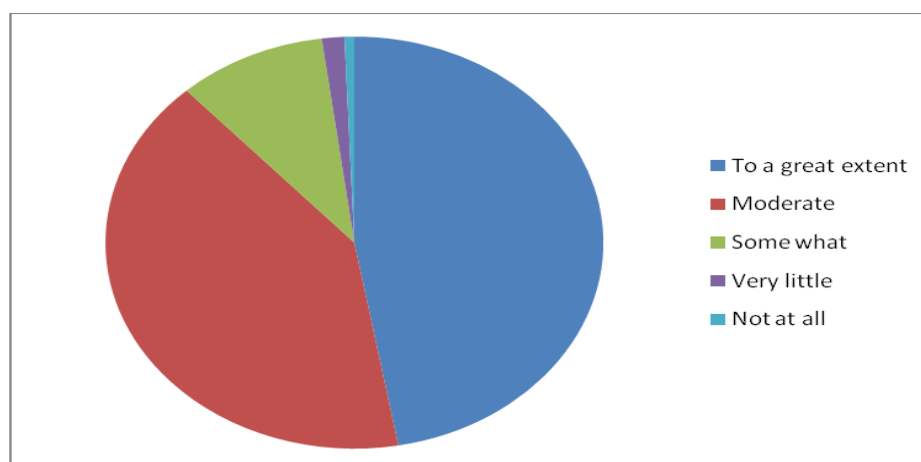
17. Teachers encourage you to participate in extracurricular activities

	% No of Students
Strongly agree	39.63
Agree	43.78
Neutral	16.27
Disagree	0.13
Strongly disagree	0.19



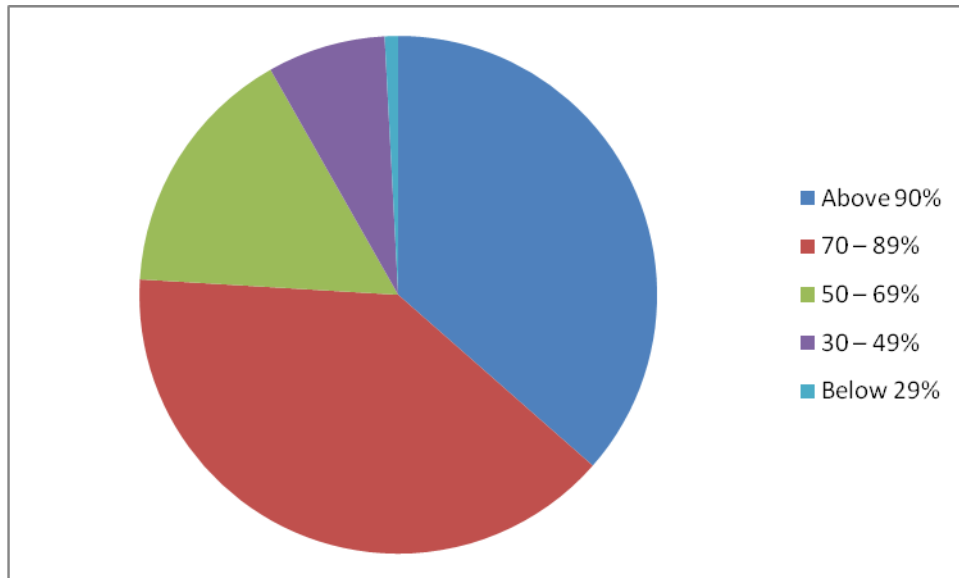
18. Efforts are made by the institute/ teachers to inculcate soft skills, life skills and employability skills to make you ready for the world of work.

	% No of Students
To a great extent	47.17
Moderate	41.05
Some what	9.68
Very little	1.46
Not at all	0.64



19. What percentage of teachers use ICT tools such as LCD projector, Multimedia, etc. while teaching.

	% No of Students
Above 90%	36.58
70 – 89%	39.60
50 – 69%	15.88
30 – 49%	7.40
Below 29%	0.84



20. The overall quality of teaching-learning process in your institute is very good.

	% No of Students
Strongly agree	39.92
Agree	44.78
Neutral	13.32
Disagree	1.75
Strongly disagree	0.23

